

# Textlog Multi

COMPREHENSIVE DATA LOGGER



## Highlights

- › Long battery life
- › Up to 2 pulse input
- › Up to 2 pressure input
- › Up to 2 temperature input
- › Up to 2 Analogue current/voltage
- › GPRS, SMS or manual download
- › Fast and flexible logging
- › Frequent & low cost transmission
- › IP68
- › Separate "nightline" window
- › Multiple alarm settings
- › Remotely configurable & upgradeable
- › Large memory
- › External antenna option

**GPRS/SMS/Manual Data Logger**  
Efficient, flexible and reliable data

# Textlog Multi

FLEXIBLE & COMPREHENSIVE



Textlog is Ashridge's intelligent, battery powered data logger range, offering a comprehensive and flexible solution for a wide range of applications. All loggers have the option of manual download or remote transmission of data and are waterproof, lightweight and simple to install.

**Textlog Multi** offers up to 5 channels and a wide combination of options for flow, pressure and temperature monitoring, providing the complete data logging solution for highly industrial through to domestic applications. In addition, all loggers have a large memory and long battery life and are totally portable.

The loggers provide frequent transmission of data for remote telemetry units and a variety of logging options down to 1 second for both GSM and manual download versions.

Textlog Multi features a wide range of user selectable alarms as well as a "fastline" feature, which allows increased post event data. Captured data and alarms can either be manually downloaded or transmitted directly to a host PC or SCADA system. Alternatively, data can be viewed using SmartChart Web; Ashridge's hosted graphical viewing platform.

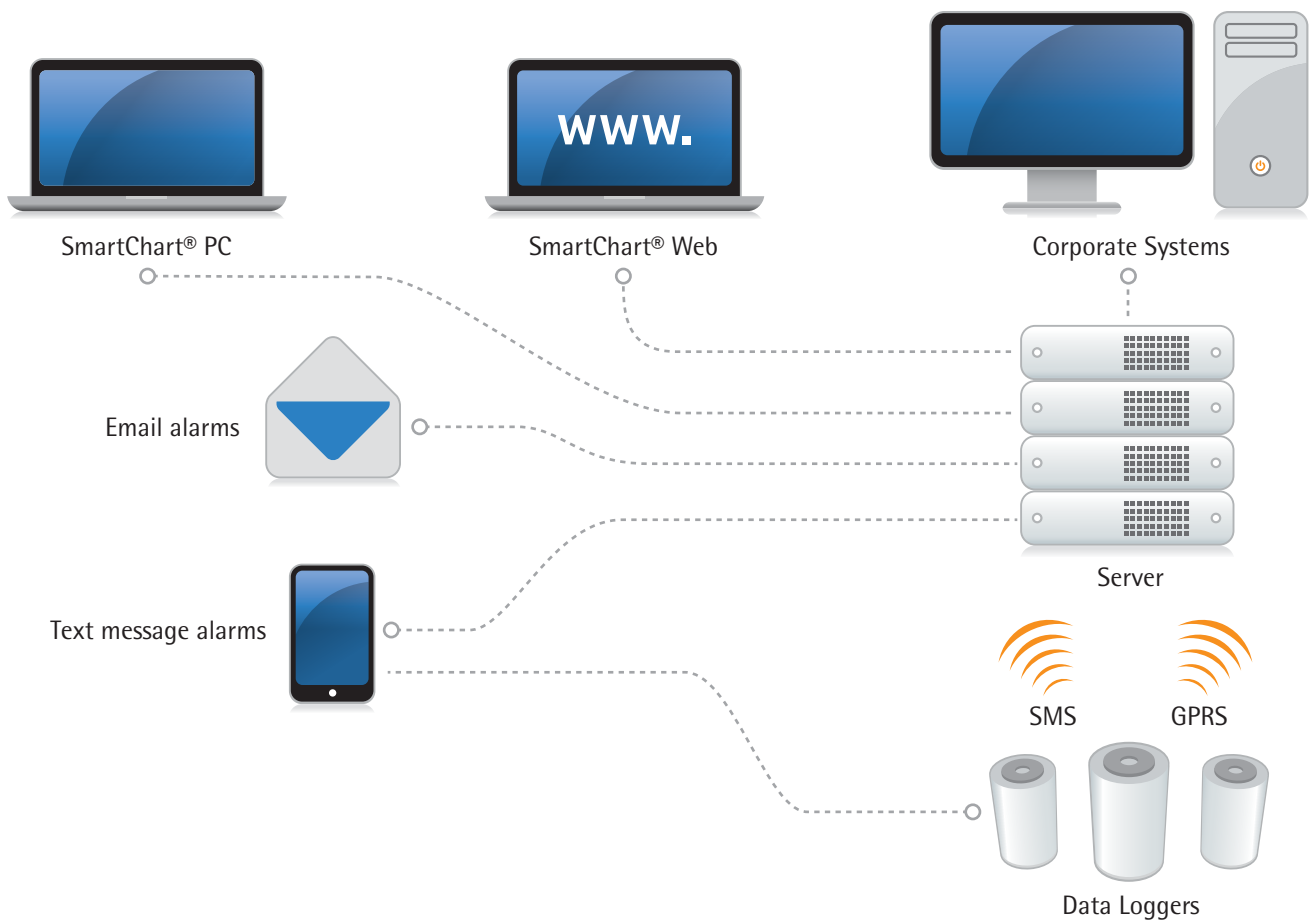
Further options available with Textlog Multi are additional memory, external battery pack and external antenna, providing a solution to the most demanding requirements.

## FEATURES AND BENEFITS

	Feature / function	Benefits
Power	Up to 10 years	Long battery life, based on usage. Additional external battery pack available
Memory	Large memory	4MB 80, 000 readings in cyclic
Graphical viewing	Easy to view data	Using SmartChart® Web or SmartChart® PC software (provided with logger)
Logging	From 1 second	Providing flexibility and custom solutions
Data Transmission	From 15 minutes	Providing fast, reliable data
Environmental	IP68 Portable	Waterproof and submersible Textlog can be reused across your network
Data	SMS/GPRS/Manual	Option to supply own SIM card. Roaming SIM option also available
Analysis	Fastline function Nightline window  Listen windows option Remotely configurable option	Providing historical data to enable further analysis Providing an additional schedule for higher frequency logging and leak detection Allowing reconfiguration outside of "normal" transmit schedule Allowing settings and firmware to be updated remotely, removing the need to visit site

# Textlog Multi

REMOTE TELEMETRY OPTION



### SmartChart® PC

SmartChart® is Ashridge Engineering's intuitive and simple to use graphical software solution which provides data viewing and printing of up to 10 data series and is compatible with all Ashridge data loggers.

An upgrade to SmartChart® Pro is available, providing increased capabilities such as report generation, trend lines, merging of graphs to allow easy analysis of multiple loggers/sites on a common axis.

### SmartChart® Web Option

SmartChart® Web is Ashridge Engineering's hosted data service, providing a platform for viewing and analysing data with all Ashridge data logging products.

SmartChart® Web features a comprehensive suite of options, and enables fast and reliable data to numerous users without geographical and other complex infrastructure restrictions.

## Textlog Multi

### TECHNICAL SPECIFICATION

Textlog Multi	
Battery Life	Lithium battery up to 10 years
Memory	Non volatile memory. 4 MB (8 or 16 by request) 80,000 readings in cyclic log
Internal Pressure input	Up to 2 Pressure input: 5/10/20Bar (0.25%/0.1%)
Input connections	4 way souriau socket
Digital input	Up to 2 pulse and 1 state
GSM Modem	Quad Band
Data Transmission	SMS/GPRS to server, SmartChart® Web hosted, Ashridge hosted or manual download
Serial Port	RS232 to infra-red port/ USB to infra-red port
Alarm Dial Out	Multiple High / Low
Clock	On board 24 hour real time clock with date facility
Configuration	Remotely configurable option Flexible logging and transmission settings
Logging interval	1 second to 24 hours
Serial Inputs	Reads directly from most registers (Elster, ABB, etc)
Upgrades	Remotely upgradable firmware
Analogue inputs	Up to 2 Analogue inputs (0-5V / 4-20mA)
External Transducer Supply	5V @ 150mA 8V @ 100mA 10V @ 75mA 12V @ 50mA
Environmental	-20 to 70°C IP68
Dimensions	140 x 63 diameter / 140 x 90 diameter / custom
Weight	0.4kg / 0.8kg
Materials	Non metal
Locking mechanism	Screw cap seal
Software	Textlog PC config, SmartChart® PC set up SmartChart® Web graphical viewing
Options	Pulse Interval Timing Extended supply input External antenna Temperature measurement Anti tamper Power supply for external transducers

### OPTIONS / ORDERING CODES: TEXTLOG MULTI

Configuration Block	TL	A	B	C	D	E	F	G
Textlog I 63mm Dia - 1 Battery	1							
Textlog II 90mm Dia - 2 Battery	2							
Textlog Multi		M						
No Modem				L				
Modem - Internal Antenna				M				
Modem - External Antenna				E				
None					0			
Pulse *					1			
External Transducer Power *					2			
None					0			
Voltage (0-5V)					1			
Current (4-20mA)					2			
Meter RX *					4			
Tamper Detection *					8			
None					0			
Voltage (0-5V) *					1			
Current (4-20mA) *					2			
Meter TX *					4			
Pulse *					8			
None						0		
1 Pressure *^						1		
2 Pressure *^						2		
None							X	
5 Bar							A	
10 Bar							B	
20 Bar							C	
0.25% Calibration						0		
0.1% Calibration						1		
None								X
1 Temperature *^								A
2 Temperature *^								B
None								
External Supply Input *								E

# Textlog II must be chosen when external supply input is chosen. This will lower the total number of allowed pressure and temperature to 1, unless no options in block D are chosen.

\* If a starred option is chosen in more than one block out of D,E and F or the total of pressure and temperatures is 2 or more, then a Textlog II must be chosen

^ The total of pressures and temperatures combined must not be greater than 2

### Example:

Textlog 2 - GSM - 2 Pulse - 1 State - 2x10bar Pressure  
TL2-M-M-188-2B0-X-X

### TEXTLOG DATA LOGGER RANGE

**Textlog Pressure**  
1 or 2 pressure inputs

**Textlog Flow**  
single or dual channel

**Textlog Multi**  
1 or 2 pressure, up to 2 analogue inputs

**Textlog AMR**  
1 serial input or up to 2 pulse

**Textlog Analogue**  
up to 2 analogue inputs

Please refer to the Textlog selection guide on our website for more information on the whole range of Ashridge data loggers at [www.ash-eng.co.uk/products](http://www.ash-eng.co.uk/products)

AGENT



BS EN 61000-6-3  
BS EN 61000-6-1

TLM0514

Subject to change without notification

Ashridge Engineering Ltd.

Unit 1a, 58 North Road Industrial Estate,  
Okehampton, Devon, EX20 1BQ, United Kingdom

t: +44 (0) 1837 53381

f: +44 (0) 1837 55022

e: [sales@ash-eng.co.uk](mailto:sales@ash-eng.co.uk)

[www.ash-eng.co.uk](http://www.ash-eng.co.uk)



**ASHRIDGE®**

[www.ash-eng.co.uk](http://www.ash-eng.co.uk)